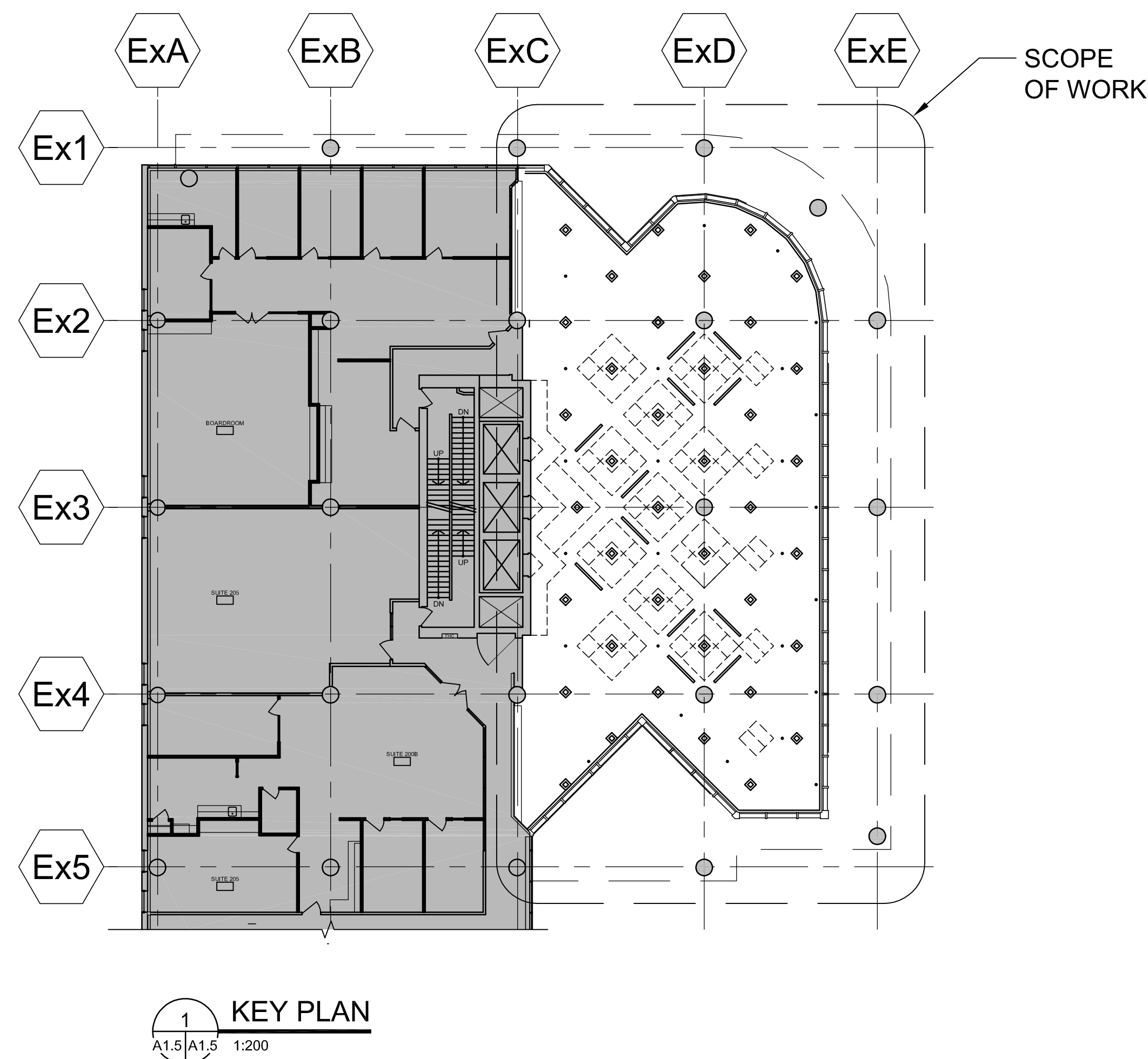


SHERWOOD PLACE REHABILITATION 2ND FLOOR ATRIUM CEILING DEMOLITION

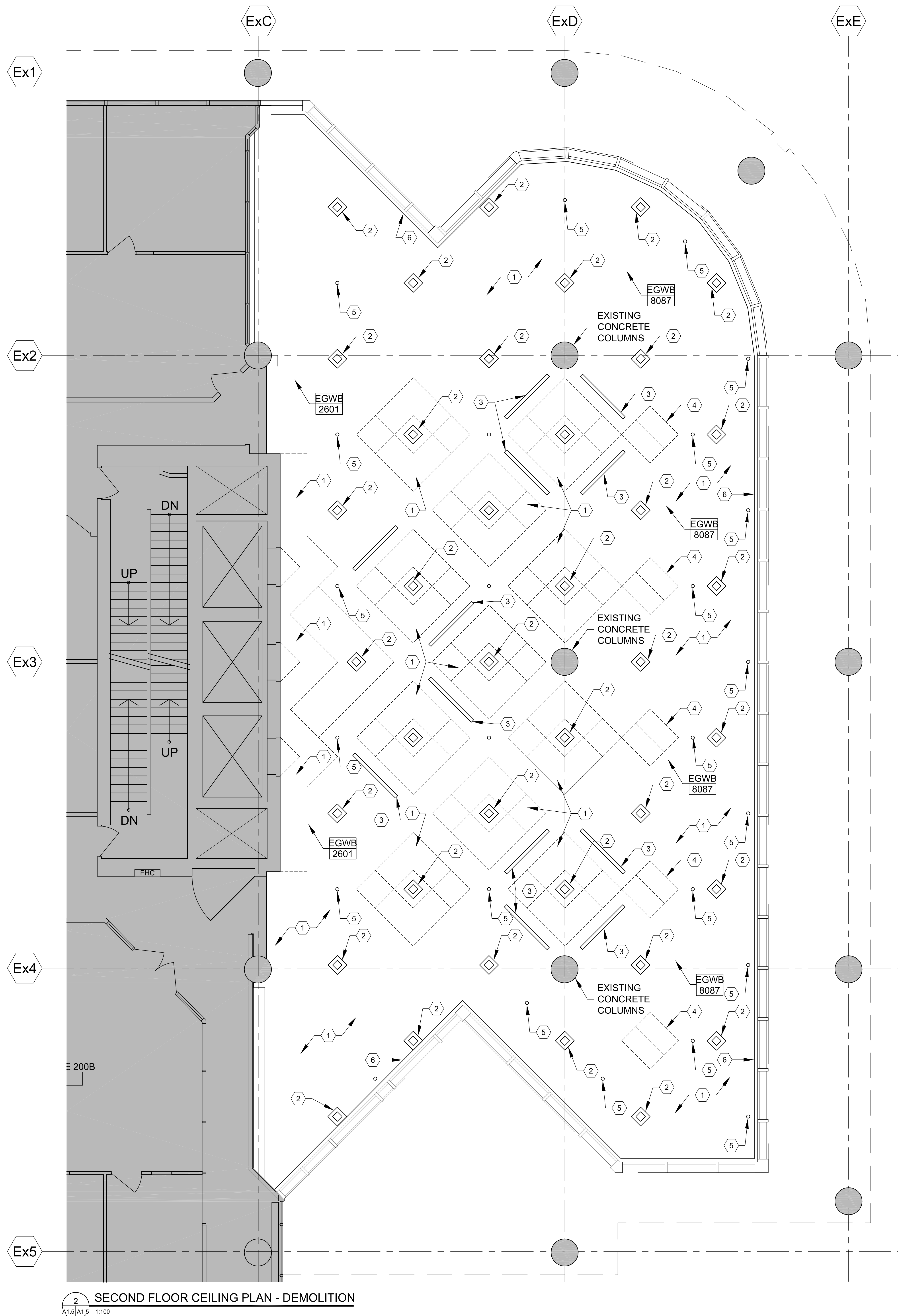
1900 ALBERT STREET,
REGINA, SASKATCHEWAN



- DEMOLITION KEY NOTES**
1. REMOVE EXISTING GYPSUM BOARD CEILING
 2. LIGHT FIXTURES TO BE TEMPORARILY SUSPENDED DURING AND AFTER DEMOLITION
 3. SUPPLY AIR GRILLES REMOVED, ALL DUCTWORK TO REMAIN
 4. CEILING ACCESS HATCHES TO BE REMOVED
 5. SPRINKLERS TO REMAIN, HEAD MODIFICATION BY OWNER
 6. PERIMETER LINEAR DIFFUSERS TO BE REMOVED, DUCTWORK TO REMAIN

- DEMOLITION NOTES**
1. IT IS CONTRACTOR'S RESPONSIBILITY TO REFER TO ALL INFORMATION IN THE GENERAL NOTES.
 2. CONTRACTOR WILL BE RESPONSIBLE FOR ANY DAMAGE DONE TO EXISTING PARTITIONS, FINISHES AND ALL OTHER COMPONENTS TO REMAIN AND ADJACENT SPACES.
 3. REFER TO ELECTRICAL AND MECHANICAL CONSULTANTS' DRAWINGS FOR EXTENT OF DEMOLITION.
 4. UNLESS OTHERWISE NOTED, ALL EXISTING PARTITIONS, DOOR, BRIGHT LIGHT ASSEMBLY, FLOOR FINISHES, ETC. TO REMAIN. BUILDING SPACES WILL BE OCCUPIED DURING DEMOLITION AND MUST REMAIN OPERATIONAL. CONSTRUCTION MUST BE STAGED ACCORDINGLY.
 5. ALL SALVAGED ITEMS ARE PROPERTY OF DREAM. ALL SALVAGED ITEMS SHALL BE STORED ON SITE AT PREDETERMINED LOCATION FOR REVIEW BY DREAM. ANY SALVAGE ITEMS NOT ACCEPTED BY DREAM ARE PROPERTY OF CONTRACTOR AND SHALL BE REMOVED FROM SITE.

SYMBOLS LEGEND	
	SUPPLY AIR GRILL
	EXHAUST AIR GRILL
	LIGHT FIXTURES
	EXIT LIGHT FIXTURE
MECHANICAL AND ELECTRICAL SHOWN FOR REFERENCE PURPOSES ONLY. REFER TO MECHANICAL AND ELECTRICAL DRAWINGS.	
CEILING TYPES LEGEND	
NOTE: CEILING ELEVATIONS ARE INDICATED WITH CEILING TYPE TAGS ON DRAWINGS. ELEVATIONS ARE FROM TOP OF FINISHED FLOOR TO UNDERSIDE OF CEILING FINISH.	
	EXISTING GYPSUM BOARD BULKHEAD
	ACOUSTICAL CEILING TILE 600mmx600mm, 1-BAY SUSPENSION



2 SECOND FLOOR CEILING PLAN - DEMOLITION

PSA
2292 Dewdney Avenue Regina, Saskatchewan
Canada S4R 1H3 306-757-1669
PSARCH.COM

MacPHERSON
Engineering Inc.
MECHANICAL CONSULTING ENGINEERS
220 - 2365 Albert Street, Regina, SK S4P 4K1
Phone (306) 586-7972
Fax (306) 586-5565

Ritenburg & Associates Ltd.
Consulting Electrical Engineers
450-2222 Albert Street, Regina, SK S4P 4V2
P: (306) 586-1351 F: (306) 586-1357
E: rnk@ritenburg.com

NO.	DATE	ISSUED FOR RFP	ITEM	BY	CR
1	2018-08-21	ISSUED FOR RFP			

REVISIONS

PROJECT

SHERWOOD PLACE
REHABILITATION

1900 ALBERT STREET
REGINA, SASKATCHEWAN

SHEET TITLE

SECOND FLOOR
REFLECTED CEILING
DEMOLITION PLAN

DESIGN BY	FL
DRAWN BY	FL
CHECKED	CR
APPROVED	
OWNER	DREAM
SCALE	AS NOTED
DATE	2018-08-21
FILE NO.	DRAWING NO.
18-37	D1.0
Number of Sheets	1